

PRELIMINARY ISSUE
THIS PLAN ISSUED FOR
ADVANCE INFORMATION ONLY

NAD 83
CENTERLINE ANGLE POINTS
HUMBOLDT BAY
(BAR & ENTRANCE)

PT	X	Y
C-1	5936273.49	2172157.43
C-2	5938147.59	2171508.43
C-3	5940265.09	2170773.43
C-4	5943553.39	2166602.43
C-5	5944545.29	2166122.43
C-6	5945376.39	2165957.23
C-7	5946088.69	2166728.23
C-8	5946888.99	2167508.33
C-9	5947166.09	2168359.43
C-10	5948049.99	2169917.43
C-11	5949433.89	2170455.43
C-12	5949233.79	2171119.43
C-13	5950417.39	2171891.43
C-14	5951329.29	2172556.43
C-15	5952138.39	2173530.43
C-16	5952999.89	2174706.43
C-17	5953711.89	2180451.43
C-18	5956236.79	2183159.43
C-19	5957823.09	2186379.43
C-20	5958152.59	2187513.43
C-21	5958681.79	2187878.43
C-22	5959281.79	2188378.43
C-23	5959681.79	2189078.43

NAD 83
CHANNEL ANGLE POINTS
HUMBOLDT BAY (BAR & ENTRANCE)

PT	X	Y	PT	X	Y
1	5936596.69	2173163.63	24	5959081.79	2187578.43
2	5938385.39	2172268.83	25	5958421.69	2187381.23
3	5940404.09	2171258.93	26	5958007.99	2186903.83
4	5943666.09	2169944.43	27	5958425.99	2183393.63
5	5944272.49	2166468.93	28	5958165.59	2181942.63
6	5945239.99	2166690.33	29	5958346.69	2181424.83
7	5945752.59	2166911.73	30	5958666.99	2180353.43
8	5946464.09	2167631.33	31	5958165.59	2174504.63
9	5946853.59	2168479.53	32	5952300.39	2173413.53
10	5947831.69	2170042.13	33	5951516.79	2172459.53
11	5949193.09	2170979.33	34	5950526.69	2171724.13
12	5949124.59	2171287.03	35	5949343.09	2170923.03
13	5950308.09	2172059.13	36	5948674.79	2170232.13
14	5951141.79	2172853.23	37	5948301.49	2169794.33
15	5951976.39	2173548.23	38	5947989.59	2169234.23
16	5952816.79	2174808.43	39	5948074.49	2167381.23
17	5955484.79	2180520.43	40	5946431.39	2166537.23
18	5956047.79	2183225.33	41	5945672.89	2165182.43
19	5956736.19	2187055.43	42	5945554.09	2162544.63
20	5957883.59	2187647.53	43	5944363.09	2165776.33
21	5958881.79	2188378.43	44	5943441.39	2162611.63
22	5959581.79	2189078.43	45	5943125.19	2172287.53
23	5959681.79	2189078.43	46	5937908.79	2170746.43
			47	5936950.29	2171151.43

US Army Corps of Engineers
San Francisco District
450 Golden Gate Avenue
San Francisco, CA 94102

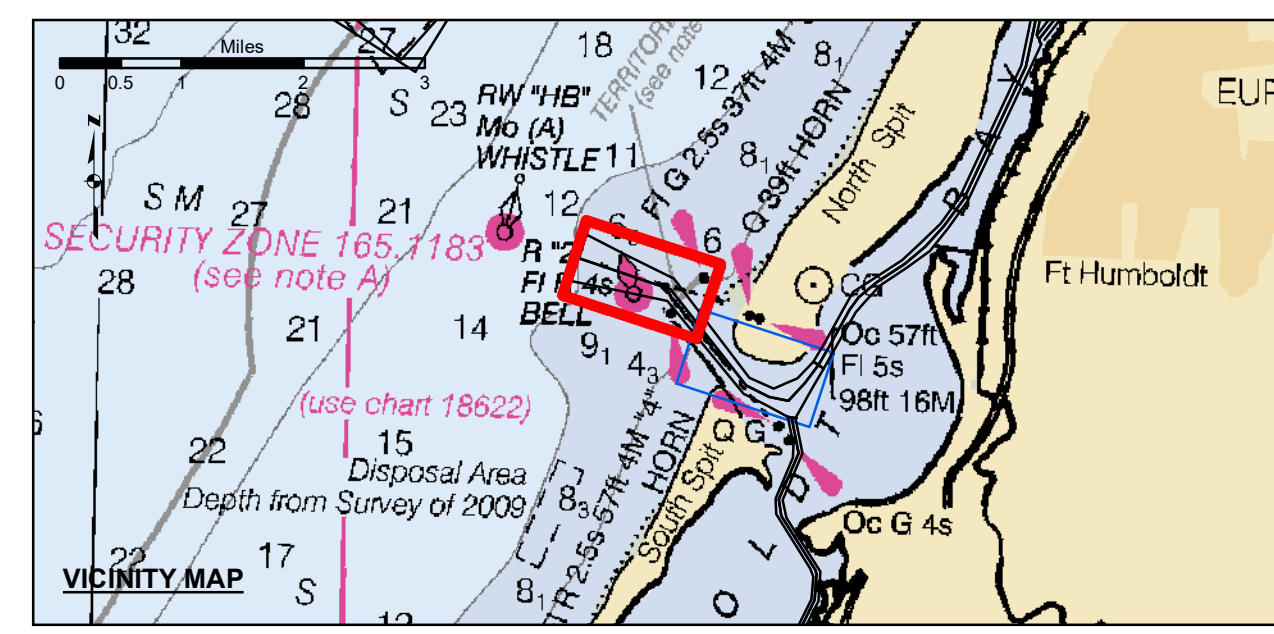
DISCLAIMER
The United States Government furnishes this information for the general information of the user. The user is responsible for the results of any application of the data for other than the intended purpose. The data represents the results of data collected by the United States Government. Engineers active and indicates the general existing conditions. As such, it is only valid for its intended use, content, time and accuracy specifications. The user is responsible for the results of any application of the data for other than the intended purpose.

PREPARED UNDER THE DIRECTION OF
TIMOTHY W. SHEBESTA
LT COLONEL, C.E. DISTRICT ENGINEER

Submittal:	Hydro Survey Team Leader	Surveyed By:	PDT	Chart Date:	Apr 09, 2024
Recommendation:	Chief, Hydro Survey Section	Plotted By:	PDT	Designed by:	
Approval:	Chief, Construction Branch	Checked By:	PDT	Drawn by:	PDT

CALIFORNIA
HUMBOLDT COUNTY
**HUMBOLDT BAY
& ENTRANCE CHANNEL
CONDITION SURVEY**
4-8 APRIL 2024

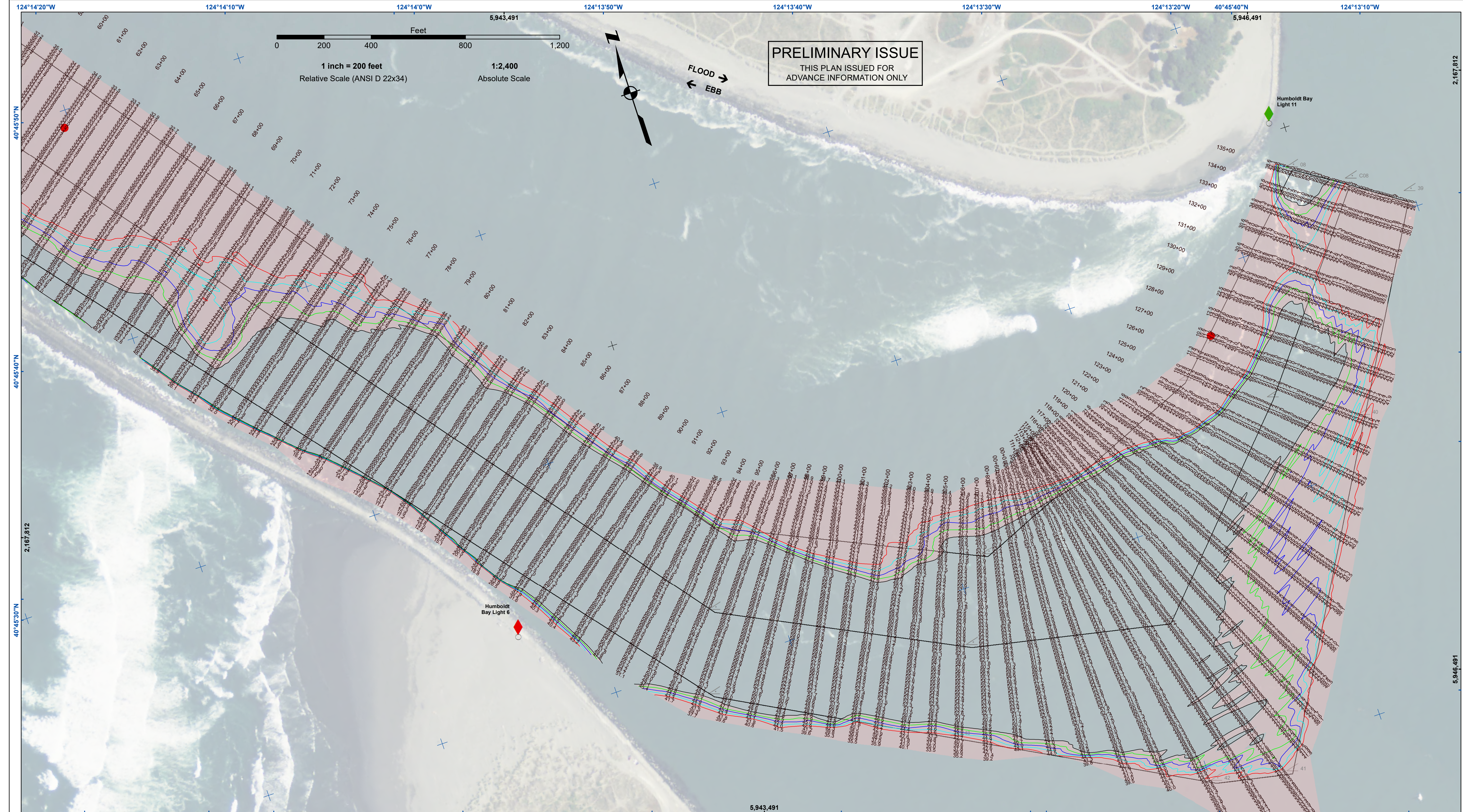
**Sheet
Number
1 of 2**



- Federal Navigation Channel
- Shoaling Area
- Placement Area
- Anchorage Area
- Wreck Area
- Submerged Wreck
- Zone_I_Angle_Points
- Beacon, General
- Obstruction Point
- Navigation Buoy
- Navigation Buoy
- Shoalest Sounding*
- Contours
- 48
- 47
- 46
- 45
- 44

NOTES:
DRAWINGS NOT TO BE USED AS NAVIGATION. ONLY CHANNEL CONDITION AT DATE OF SURVEY. THE LOCATION OF ALL NAVIGATION AIDS ARE BASED ON INFORMATION PROVIDED BY THE U.S. COAST GUARD. BUOY LOCATION REPRESENT THE POSITION OF THE SINKER ONLY.
SURVEYED BY THE CORPS OF ENGINEERS.
SOUNDING FOR THE CHANNEL, MEASURED WITH MULTIBEAM ECHOSOUNDER AND ARE SHOWN TO THE NEAREST TENTH FOOT.
SOUNDINGS ARE BASED ON THE DATUM OF MEAN LOWER LOW WATER AT THE LOCALITY.
PLANE GRID AND COORDINATES ARE BASED ON THE STATE OF CALIFORNIA COORDINATE SYSTEM, LAMBERT CONFORMAL PROJECTION, ZONE 1 NAD 83, CALIFORNIA, AS DESCRIBED IN SPECIAL PUBLICATION NO. 235, PUBLISHED BY THE NATIONAL OCEAN SURVEY.
PROJECT DEPTHS ARE AS FOLLOWS:
BAR & ENTRANCE CHANNEL = 48 FEET
NORTH BAY, SAMOA TO MILE 5.0 & = 38 FEET
EUREKA CHANNEL, FIELDS LANDING CHANNEL & MILE 5.0 TO "N" STREET = 26 FEET

1:00 INDICATES THE NUMBER AND BEGINNING OF A LINE OF SOUNDINGS.
SOUNDINGS ARE BASED ON TIDE GAUGES REFERENCED TO U.S.C. & G.S.
Vertical and Horizontal Control:
NOAA Station: 941 8767 - North Spit, CA
Benchmark:
NO 11 1940 (PID: LV0359)
MLW Elev: 4.251m
Tides:
RTK GPS, using GEOID12a and VDATUM
RTK elevations calibrated at 10.0ft nail at Coast Guard Station Humboldt Bay
Position:
RTK Positions



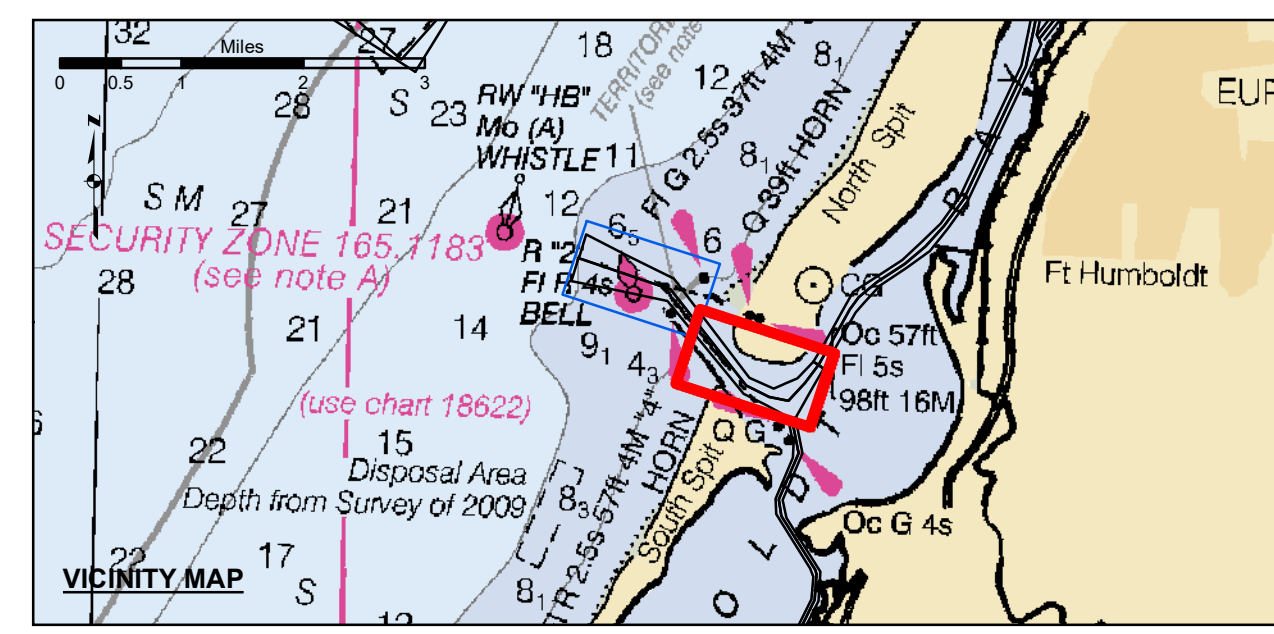
PRELIMINARY ISSUE
THIS PLAN ISSUED FOR
ADVANCE INFORMATION ONLY

5,943,491
0 200 400 800 1,200
Feet
1 inch = 200 feet
Relative Scale (ANSI D 22x34)
1:2,400
Absolute Scale

US Army Corps of Engineers
San Francisco District
450 Golden Gate Avenue
San Francisco, CA 94102

DISCLAIMER
The United States Government furnishes this information as a service to the public and does not warrant, express or implied, the accuracy, completeness, or reliability of the data. The user is responsible for the results of any application of the data for other than its intended purpose. The recipient may not transfer these data to others without also transferring this disclaimer.

Prepared Under the Direction of TIMOTHY W. SHEBESTA LT COLONEL, C.E., DISTRICT ENGINEER	Chart Date: Apr 09, 2024
Submitted: Hydro Survey Team Leader	Designed by: PDT
Recommended: Chief, Hydro Survey Section	Checked by: PDT
Approved: Chief, Construction Branch	Drawn by: PDT



Federal Navigation Channel	Beacon, General	Contours
Shoaling Area	Navigation Buoy	-48
Placement Area	Navigation Buoy	-47
Anchorage Area	Shoalest Sounding*	-46
Wreck Area		-45
Submerged Wreck		-44
Zone_I_Angle_Points		

NOTES:
DRAWINGS NOT TO BE USED AS NAVIGATION. ONLY CHANNEL CONDITION AT DATE OF SURVEY. THE LOCATION OF ALL NAVIGATION AIDS ARE BASED ON INFORMATION PROVIDED BY THE U.S. COAST GUARD. BUOY LOCATION REPRESENT THE POSITION OF THE SINKER ONLY.
SURVEYED BY THE CORPS OF ENGINEERS.
SOUNDING FOR THE CHANNEL MEASURED WITH MULTIBEAM ECHOSOUNDER AND ARE SHOWN TO THE NEAREST TENTH FOOT.
SOUNDINGS ARE BASED ON THE DATUM OF MEAN LOWER LOW WATER AT THE LOCALITY.
PLANE GRID AND COORDINATES ARE BASED ON THE STATE OF CALIFORNIA COORDINATE SYSTEM, LAMBERT CONFORMAL PROJECTION, ZONE 11 NAD 83, CALIFORNIA, AS DESCRIBED IN SPECIAL PUBLICATION NO. 235, PUBLISHED BY THE NATIONAL OCEANIC SURVEY.
PROJECT DEPTHS ARE AS FOLLOWS:
BAR & ENTRANCE CHANNEL = 48 FEET
NORTH BAY, SAMOA TO MILE 5.0 & = 38 FEET
EUREKA CHANNEL, FIELDS LANDING CHANNEL & MILE 5.0 TO "N" STREET = 26 FEET

1:00 INDICATES THE NUMBER AND BEGINNING OF A LINE OF SOUNDINGS.
SOUNDINGS ARE BASED ON TIDE GAUGES REFERENCED TO U.S.C. & G.S.
Vertical and Horizontal Control:
NOAA Station: 941 8767 - North Spit, CA
Benchmark:
NO 11 1940 (PID: LV0359)
MLW Elev: 4.251m
Tides:
RTK GPS, using GEOID12a and VDATUM
RTK elevations calibrated at 10.0ft nail at Coast Guard Station Humboldt Bay
Position:
RTK Positions

CALIFORNIA
HUMBOLDT COUNTY
**HUMBOLDT BAY
BAR & ENTRANCE CHANNEL
CONDITION SURVEY
4-8 APRIL 2024**

**Sheet
Number
2 of 2**